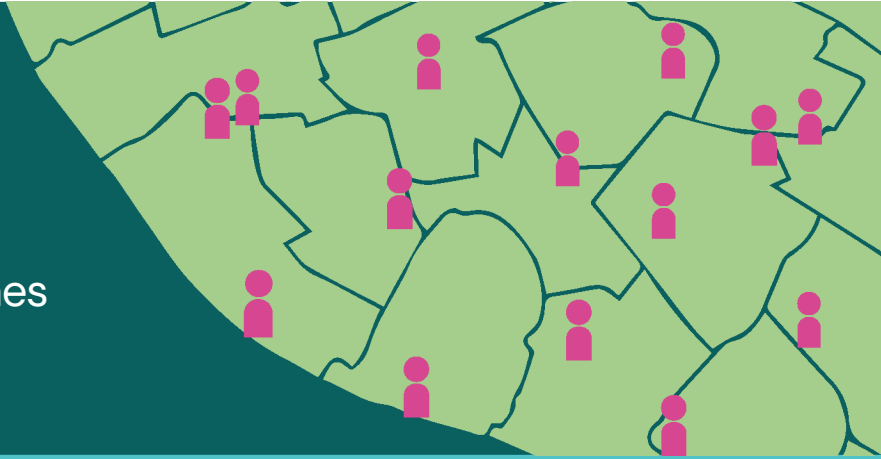


Economies for Healthier Lives:

Improving Employment outcomes in Liverpool City Region



Health & Integration Toolkit Goals

- 1 Improve access to employment opportunities for job seekers or retention in existing employment for people with a health condition(s).
- 2 Raise the visibility and where appropriate, encourage the development of arrangements for collaboration between the hierarchies of organisations which directly or indirectly aim to improve people's health, wellbeing and economic prosperity.
- 3 Identify how data can be used in novel ways to inform the relationship between health and employment support, and how this can be used in collaboration with stakeholders.

Theory of Change

PROBLEM

Due to poor health, Liverpool City Region (LCR) has some of the highest rates of economic inactivity.

SOLUTION

Build a coordinated approach between employment support and public health across LCR to improve health and employment outcomes.

Improve access to employment opportunities and job retention for citizens dealing with one or more health conditions.

1. Stakeholder Engagement & 2. Context Mapping

Meet with stakeholder focus groups to identify opportunities and insights at the intersection of public health and employment support. Seek to identify the benefits of (and barriers to) employment-related support services delivered across the LCR.

Focus groups: (1) Residents (2) Employers (3) Services (includes policymakers, commissioners, funders, managers, and practitioners of relevant organisations)

3. Data Analysis

Equity Audit: Review data from local employment support services and compare the demographic breakdown of clients with census.

Linkage: Link local employment support data into the wider Civic Data Cooperative infrastructure to better understand population needs and the effects of such programmes.

Area Profiles: Assess the relationship between health metrics and employment outcomes using the 2021 census

4. Evidence Benchmarking & Systematic Review

Evidence: Study effective initiatives for improved employment outcomes for people with disabilities and/or long-term health conditions in the UK.

Mapping: Identify the existing programmes and policies in place in LCR to create an up-to-date picture of the current landscape.

SERVICE REDESIGN & IMPROVEMENTS

- 1 Identify recommendations to improve the service offering and better meet population needs.
- 2 Design an options appraisal to assess feasibility and cost of potential interventions that meet local population needs.
- 3 Test the health effects of the redesigned services through further stakeholder engagement and data analysis.

OUTPUT

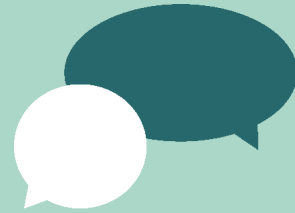
Economy and Health Integration Toolkit

The customised toolkit will collate our findings and offer a blueprint for other regions to follow.



Context mapping with stakeholders

Identifying the benefits of (and barriers to) employment-related support services delivered across the LCR.

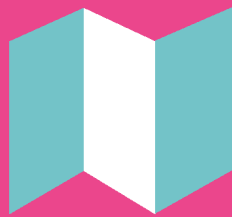
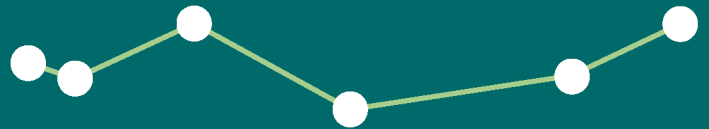


Four Actions

that will deliver the intelligence to support this aim

Evidence Benchmarking

Identifying what is locally available and how this compares to existing evidence



Stakeholder engagement

Collaborating with employers, residents, and public services to improve partnerships and make workplaces more inclusive

Data Analysis

Informing how we can better meet the needs of the local population, particularly linking employment support with public health data